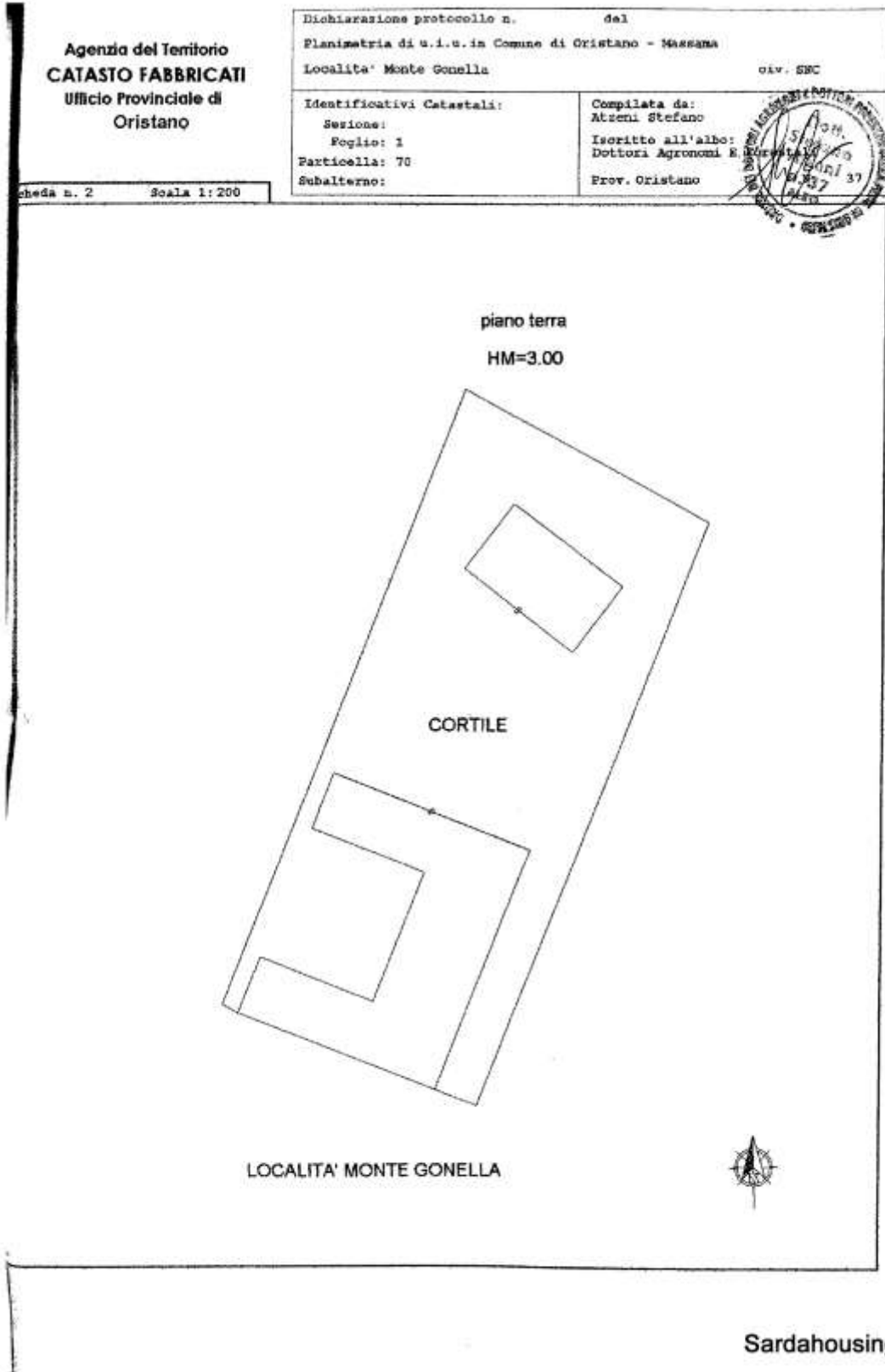




## Casale Màssama – plans

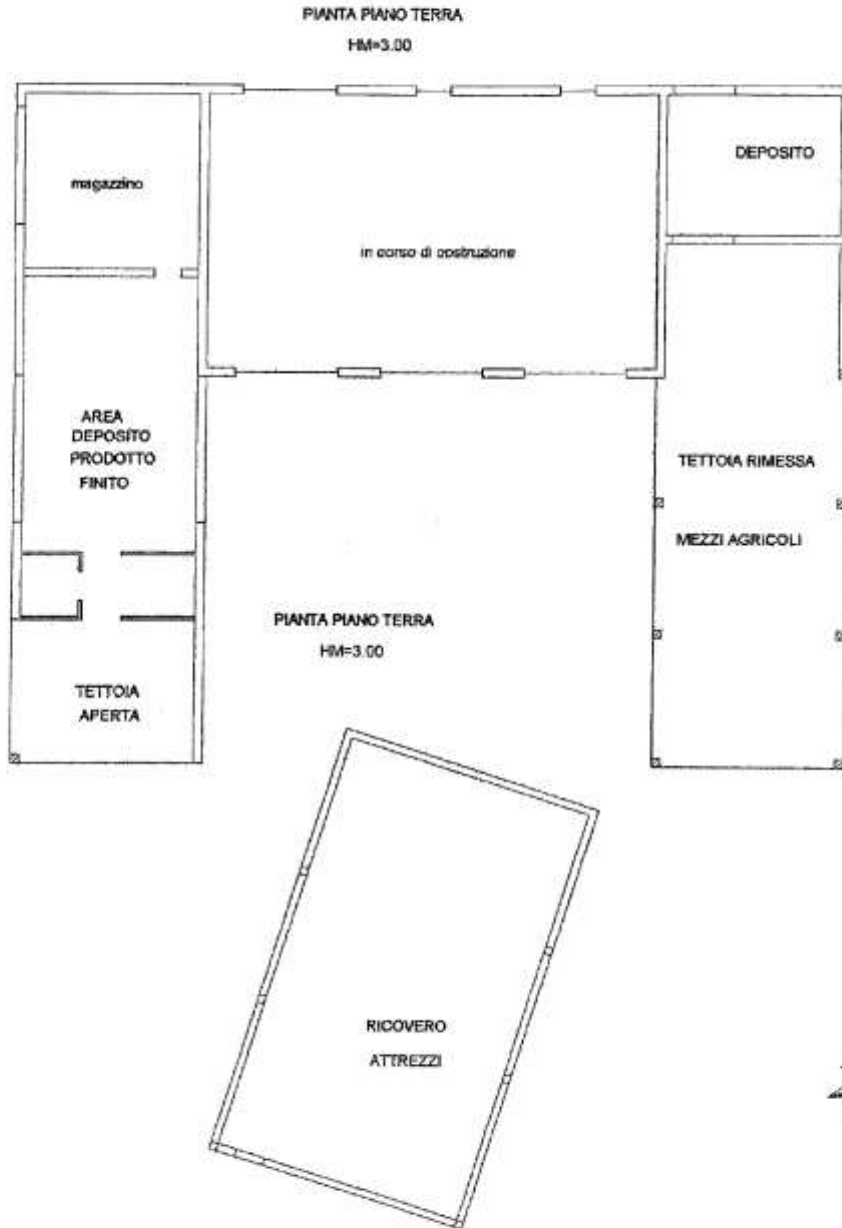


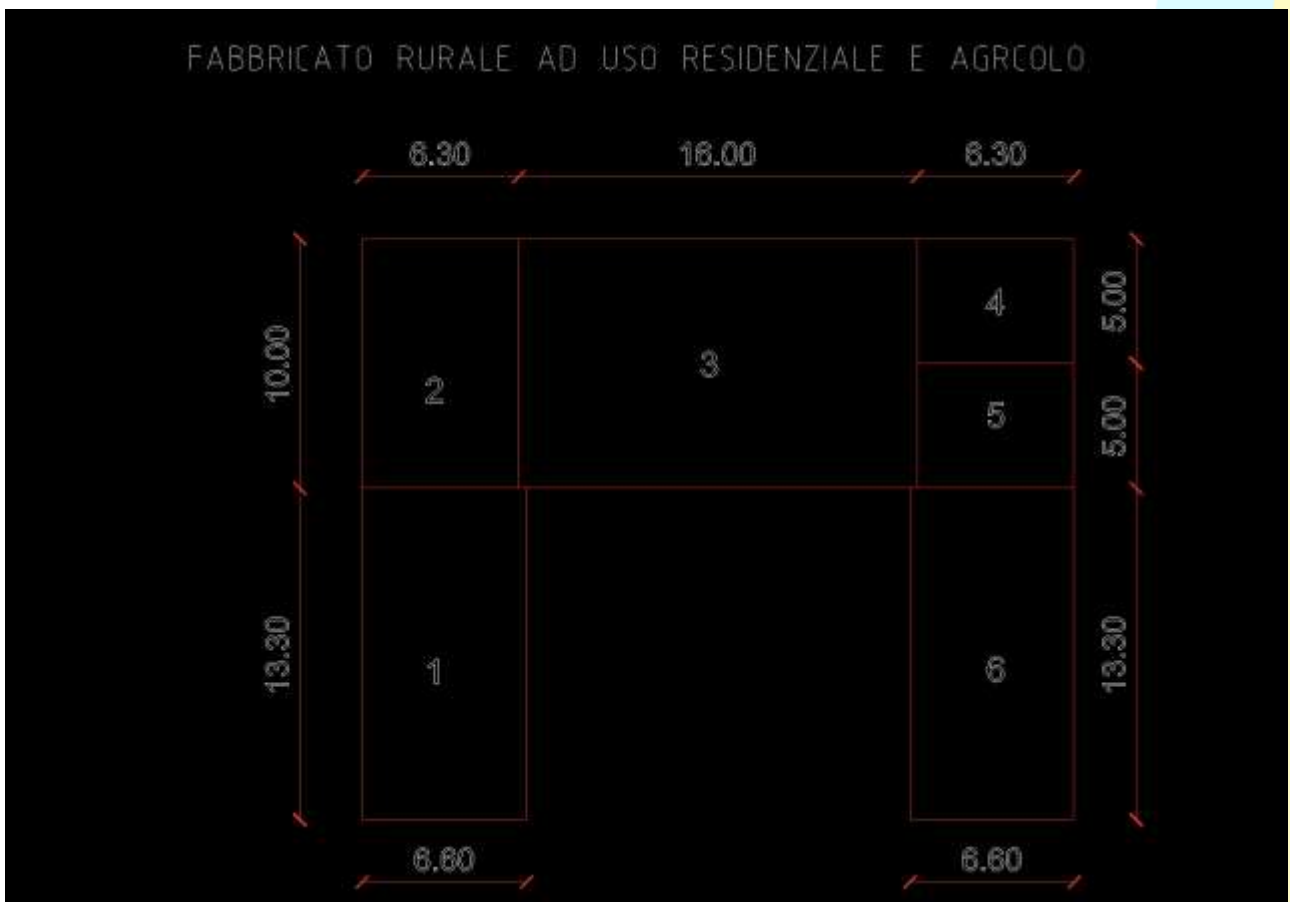
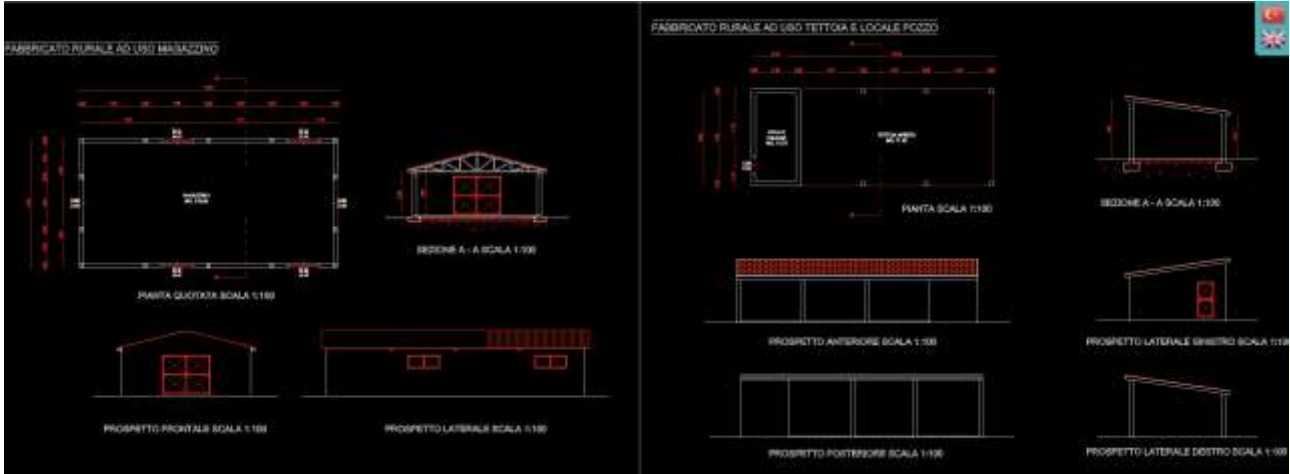


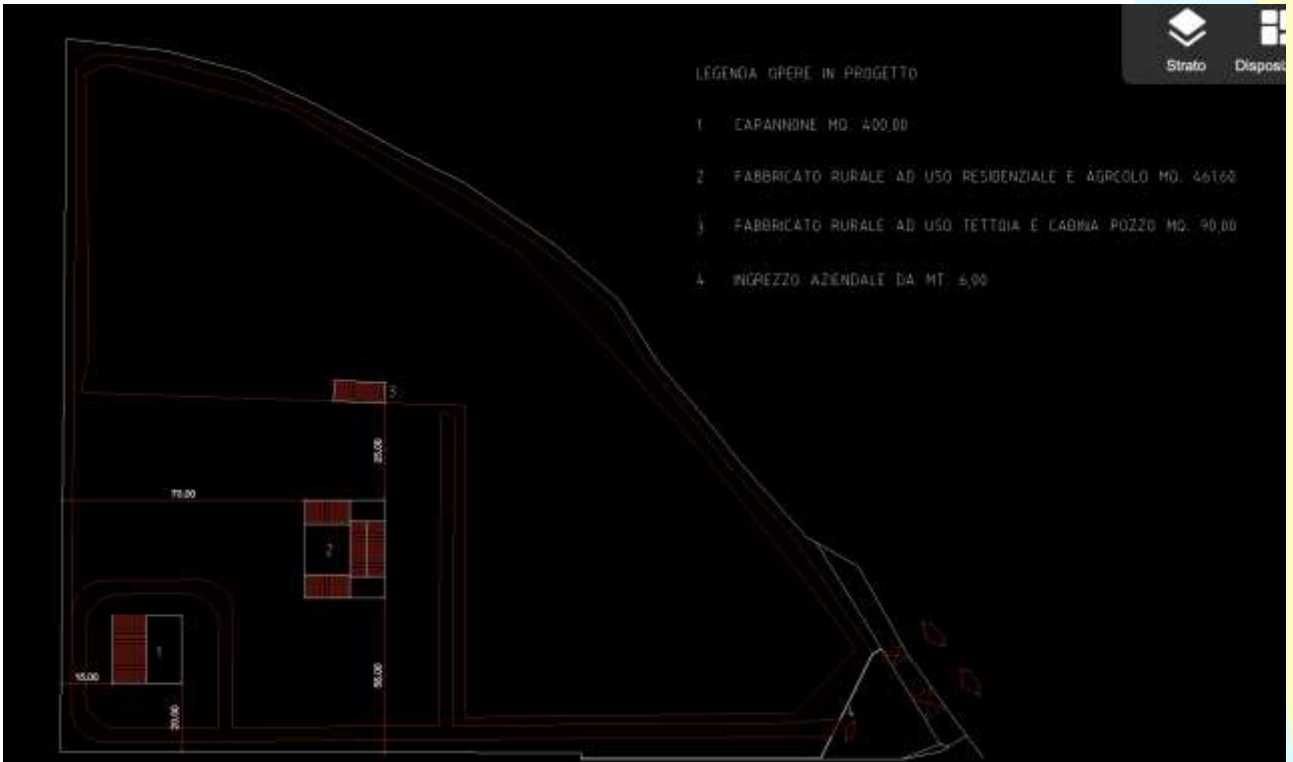
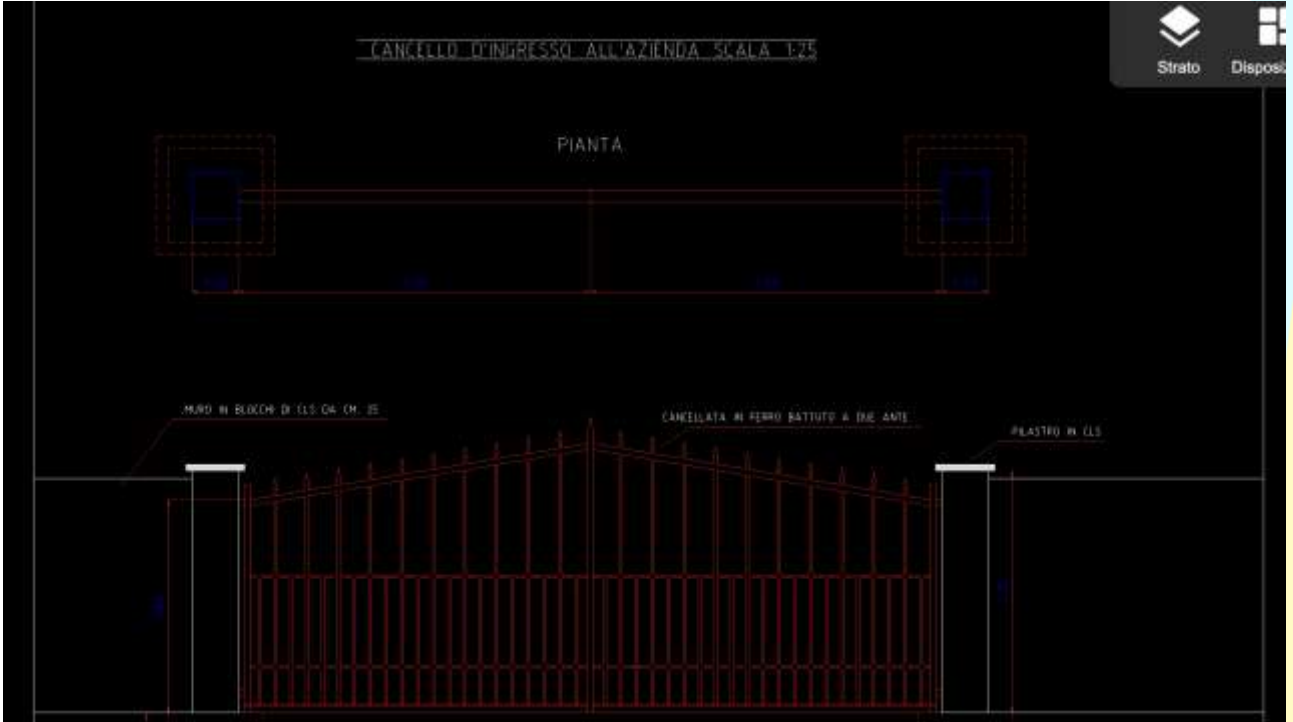
**Agenzia del Territorio  
CATASTO FABBRICATI  
Ufficio Provinciale di  
Oristano**

Dichiarazione protocollo n. _____ del _____ Planimetria di u.i.u. in Comune di Oristano - Massama Localita' Monte Gonella div. SSC	
Identificativi Catastali: Serzione: Foglio: 1 Particella: 70 Subalterno:	Compilata da: Atroni Stefano Iscritto all'albo: Dottori Agronomi E Forestali Prov. Oristano

bed n. 1 Scala 1:200





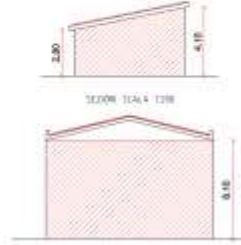
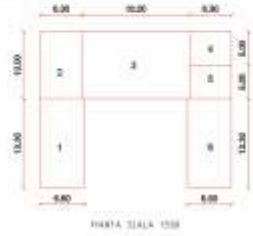




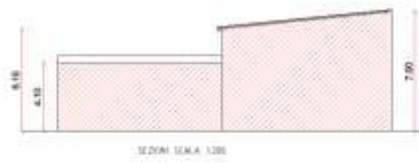
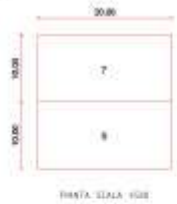
## CALCOLO PLANOVOLUMETRICO



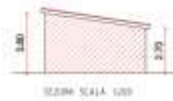
FABBRICATO PARALELELE AD USO RESIDENZIALE E AGRIKOLA



CAPANNONE



FABBRICATO PARALELELO AD USO FERTILE C/USOAGRI COLTIVA



fabbricati ad uso residenziale:

$$1 = (16.88 \times 8.00) = \text{mq. } 135.04 \times \text{h. med. } 4.10 = \text{mc. } 553.82$$

fabbricati ad uso non residenziale:

$$7 = (11.00 \times 6.00) = \text{mq. } 66.00 \times \text{h. med. } 3.45 = \text{mc. } 227.70$$

$$2 = (10.00 \times 5.00) = \text{mq. } 50.00 \times \text{h. med. } 3.10 = \text{mc. } 155.00$$

$$4 = (5.00 \times 5.00) = \text{mq. } 25.00 \times \text{h. med. } 3.10 = \text{mc. } 77.50$$

$$5 = (5.00 \times 5.00) = \text{mq. } 25.00 \times \text{h. med. } 3.10 = \text{mc. } 77.50$$

$$6 = (15.00 \times 4.00) = \text{mq. } 60.00 \times \text{h. med. } 3.65 = \text{mc. } 218.10$$

$$3 = (18.88 \times 28.00) = \text{mq. } 528.64 \times \text{h. med. } 6.50 = \text{mc. } 3438.56$$

$$8 = (18.88 \times 28.00) = \text{mq. } 528.64 \times \text{h. med. } 6.50 = \text{mc. } 3438.56$$

$$9 = (11.00 \times 6.00) = \text{mq. } 66.00 \times \text{h. med. } 3.10 = \text{mc. } 204.60$$

$$10 = (11.00 \times 6.00) = \text{mq. } 66.00 \times \text{h. med. } 3.10 = \text{mc. } 204.60$$

Totale superficie coperta residenziale in progetto mq. 360.00

Totale volume residenziale in progetto mc. 916.80

base di fabbricabilità:

$$\text{mc. } 916.80 \times \text{it. } 0.83 = \text{mq. } 760.79$$

Totale superficie coperta non residenziale in progetto mq. 791.50

Totale volume non residenziale in progetto mc. 3141.00

base di fabbricabilità:

$$\text{mc. } 3141.00 \times \text{it. } 0.25 = \text{mq. } 785.25$$

Dimostrazione delle superfici residue del computo del volume:

figura 8:

$$\text{perimetro} = 2 \times (10.00 + 20.00) = \text{mc. } 60.00$$

$$360.00 = 60.00 \times \text{mc. } 6.00$$

$$\text{lati rivisti} = \text{mc. } 20.00 = \text{mc. } 4.00$$

figura 9:

$$\text{perimetro} = 2 \times (11.00 + 6.00) = \text{mc. } 34.00$$

$$266.88 = 34.00 \times \text{mc. } 7.85$$

$$\text{lati rivisti} = \text{mc. } 6.00 = \text{mc. } 1.20$$