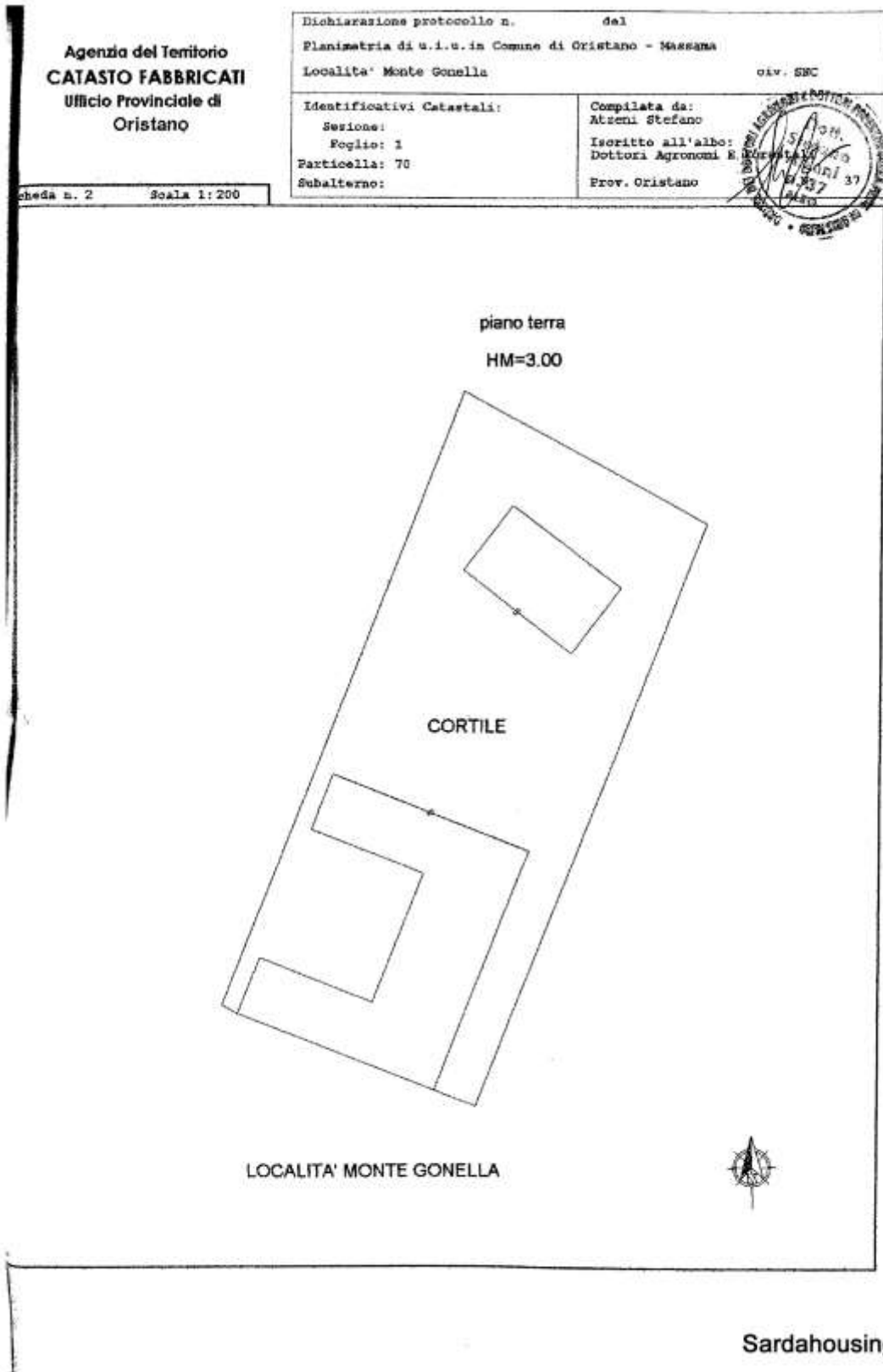




Casale Màssama – planimetrie

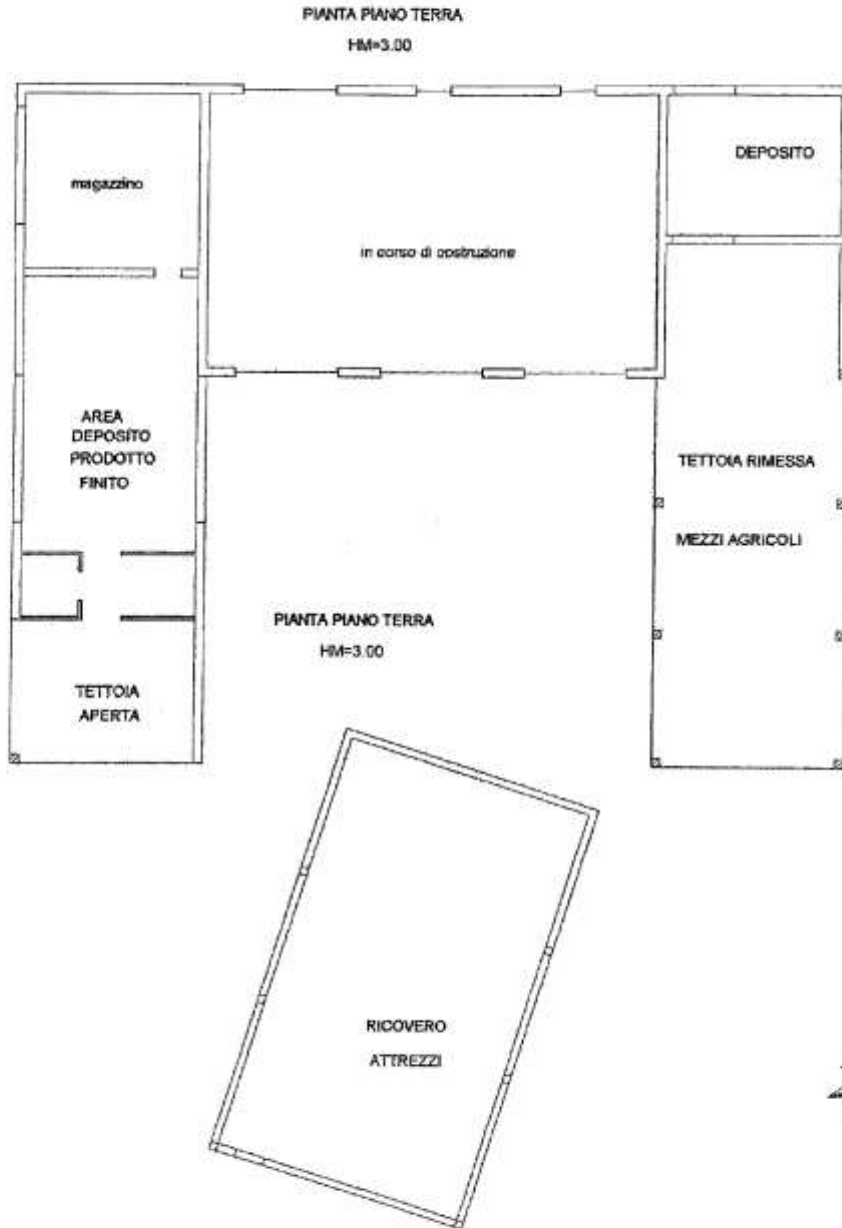


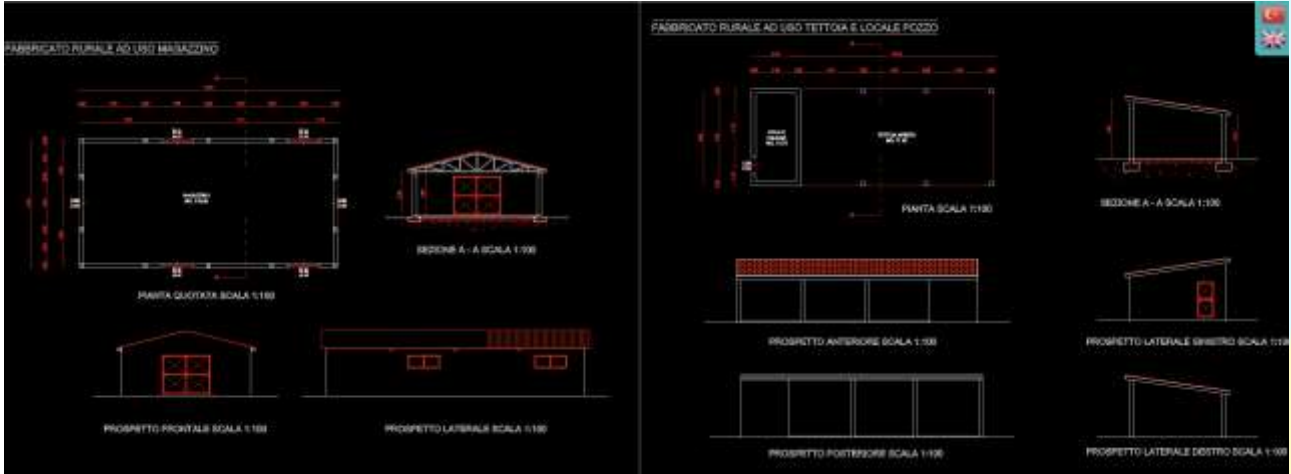


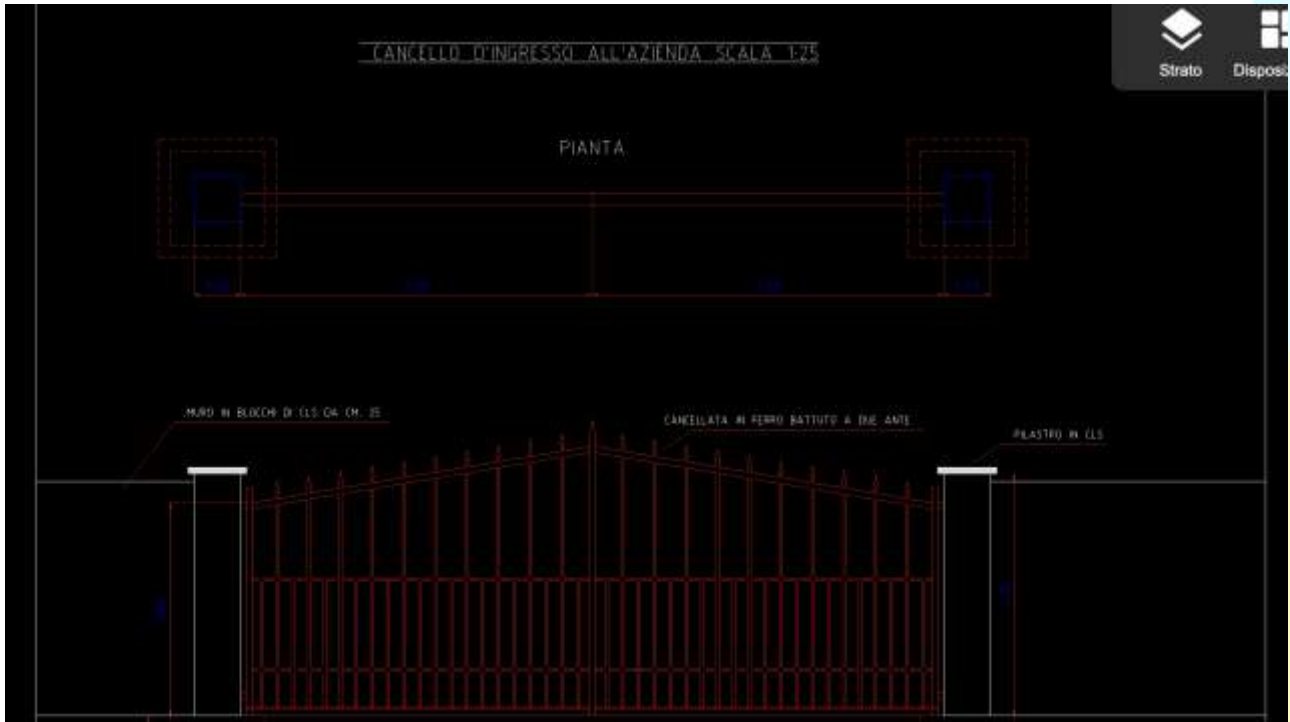
Agenzia del Territorio
CATASTO FABBRICATI
Ufficio Provinciale di
Oristano

Dichiarazione protocollo n. _____ del _____	
Planimetria di u.i.u. in Comune di Oristano - Massama	
Localita' Monte Gonella div. SSC	
Identificativi Catastali:	Compilata da:
Sezione:	Atroni Stefano
Foglio: 1	Iscritto all'albo:
Particella: 70	Dottori Agronomi E Forestali
Subalterno:	Prov. Oristano

bed n. 1 Scala 1:200





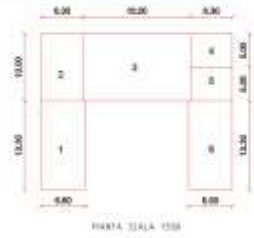




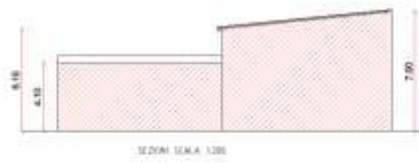
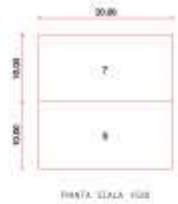
CALCOLO PLANOVOLUMETRICO



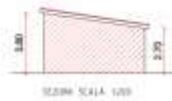
FABBRICATO PARALELELE AD USO RESIDENZIALE E AGRIKOLA



CAPANNONE



FABBRICATO PARALELELO AD USO FERTILE C. USUALE CALDAIA



fabbricati ad uso residenziale:

$$1 = (16.88 \times 8.00) = \text{mq. } 135.04 \times \text{h. med. } 4.10 = \text{mc. } 553.82$$

fabbricati ad uso non residenziale:

$$7 = (15.00 \times 6.00) = \text{mq. } 90.00 \times \text{h. med. } 3.45 = \text{mc. } 310.50$$

$$2 = (10.00 \times 5.00) = \text{mq. } 50.00 \times \text{h. med. } 3.10 = \text{mc. } 155.00$$

$$4 = (5.00 \times 5.00) = \text{mq. } 25.00 \times \text{h. med. } 3.10 = \text{mc. } 77.50$$

$$5 = (5.00 \times 5.00) = \text{mq. } 25.00 \times \text{h. med. } 3.10 = \text{mc. } 77.50$$

$$6 = (15.00 \times 4.00) = \text{mq. } 60.00 \times \text{h. med. } 3.65 = \text{mc. } 219.00$$

$$3 = (18.88 \times 28.00) = \text{mq. } 528.88 \times \text{h. med. } 6.58 = \text{mc. } 3470.88$$

$$8 = (18.88 \times 28.00) = \text{mq. } 528.88 \times \text{h. med. } 6.58 = \text{mc. } 3470.88$$

$$9 = (5.00 \times 3.00) = \text{mq. } 15.00 \times \text{h. med. } 3.10 = \text{mc. } 46.50$$

$$10 = (5.00 \times 3.00) = \text{mq. } 15.00 \times \text{h. med. } 3.10 = \text{mc. } 46.50$$

Totale superficie coperta residenziale in progetto mq. 360.00

Totale volume residenziale in progetto mc. 916.80

base di fabbricabilità:

$$\text{mc. } 916.80 \div \text{h. } 6.60 = \text{mq. } 138.91$$

Totale superficie coperta non residenziale in progetto mq. 791.50

Totale volume non residenziale in progetto mc. 3145.80

base di fabbricabilità:

$$\text{mc. } 3145.80 \div \text{h. } 6.20 = \text{mq. } 507.55$$

Dimostrazione delle superfici residue del computo del volume:

figura 8:

$$\text{perimetro} = 2 \times (10.00 + 30.00) = \text{ml. } 80.00$$

$$360.00 \div 0.70 = \text{ml. } 514.29$$

$$\text{lati rivisti} = \text{ml. } 594.29 = \text{ml. } 600.00$$

figura 9:

$$\text{perimetro} = 2 \times (5.00 + 12.00) = \text{ml. } 34.00$$

$$150.00 \div 0.70 = \text{ml. } 214.29$$

$$\text{lati rivisti} = \text{ml. } 248.29 = \text{ml. } 240.00$$